

Answer to case of months 2

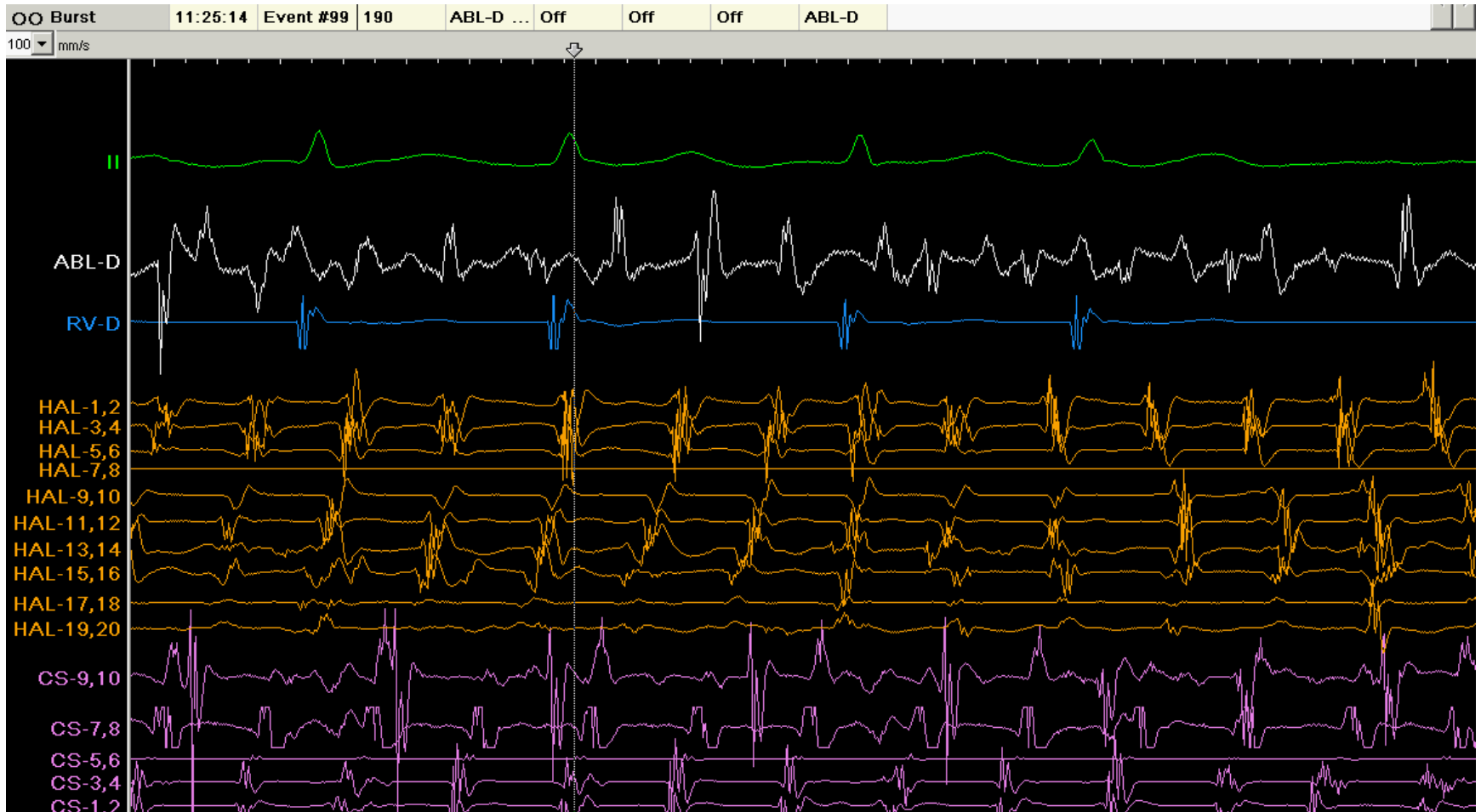
MH.Nikoo MD

MV.Jorat MD

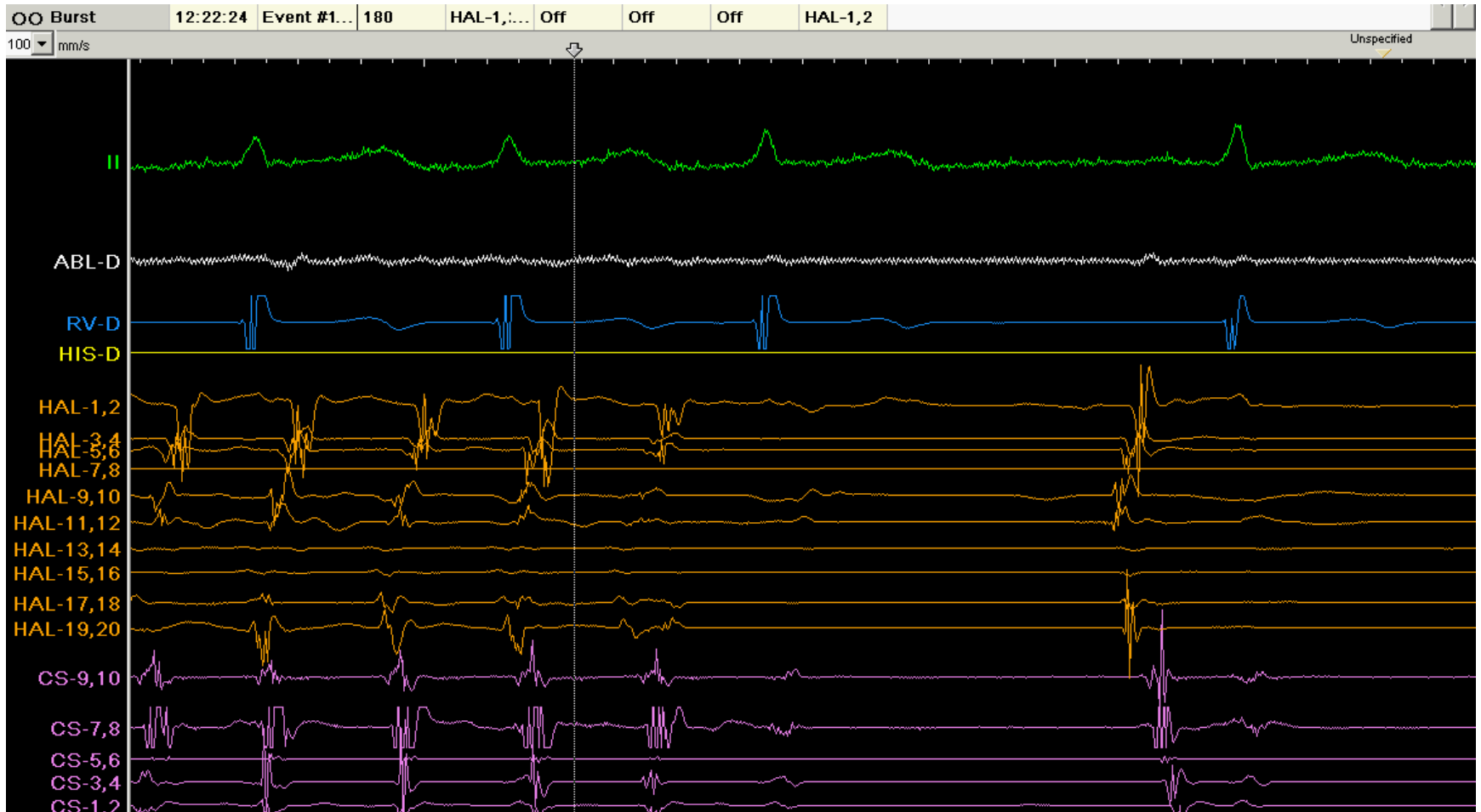
SH.Shahrzad MD

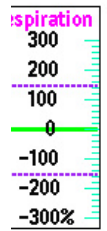
- As you clearly seen AF is faster in Halo catheters , so trigger should be in RA
- Isolation of SVC cause regularization and then termination of AF
- AF was non-inducible thereafter with and without isoproterenol
- During 6 months follow up there was no recurrence

Regularization during isolation of SVC



Termination after SVC isolation





Electrode spacing: | Distal | D-2 | 2-3 | 3-4 |
Nominal (mm) 4.0 2.0 5.0 2.0